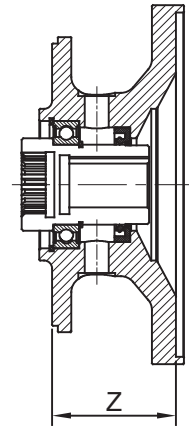
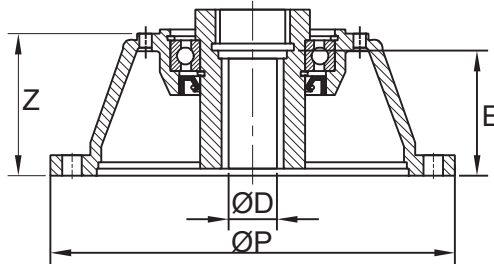



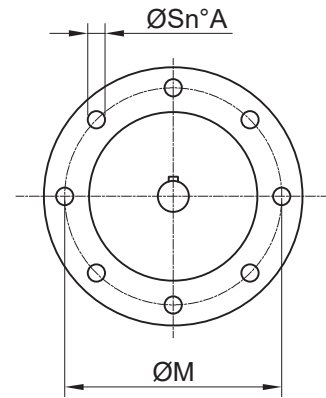
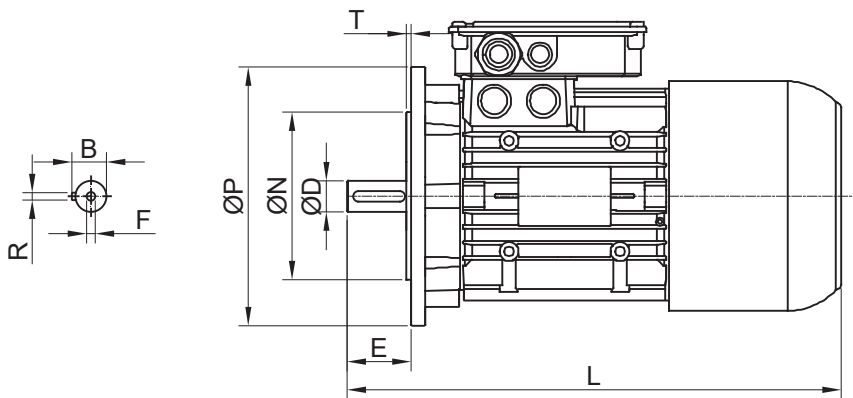
ELEKTRİK MOTORU BAĞLANTI ADAPTÖRÜ ELECTRIC MOTOR COUPLINGS ANBAUVORRICHTUNG FÜR ELEKTROMOTORE




	A	B	C	D
PD 101	1-2-3-4	-	-	-
PD 103	1-2-3-4	-	-	-
PD 105	1-2-3-4	-	-	-
PD 107	1-2-3-4	1	-	-
PD 109	2-3-4	1	-	-
PD 111	2-3-4	1	-	-
PD 113	2-3-4	1	-	-
PD 115	3-4	2	-	-
PD 117	3-4	2	1	-
PD 119	3-4	2	-	-
PD 121	3-4	2	-	1
PD 123	3-4	2	-	1
PD 125	4	3	2	-
PD 127	4	3	2	-
PD 129	4	3	-	2
PD 131	4	3	-	2
PD 133	4	3	-	2
PD 135	-	4	3	-
PD 137	-	4	3	-
PD 139	-	4	-	3
PD 141	-	4	-	3
PD 143	-	5	-	-
PD 145	-	5	-	-

IEC B5					
Ø	Z	ØD	E	ØP	
H63	36	11	32	140	A
H71	36	14	37	160	
H80	62	19	61	200	
H90	62	24	61	200	
H100-112	71	28	65	250	
H132	104	38	86	300	
H160	121+21	42	114	350	
H180	121+21	48	115	350	
H132	104+38	38	86	300	
H160	121	42	114	350	
H180	121	48	115	350	
H200	149	55	148	400	B
H225	149	60	148	450	
H250	184	65	157	550	
H160	121+54	42	114	350	
H180	121+54	48	115	350	C
H200	149+54	55	148	400	
H225	149+54	60	148	450	
H250	184+54	65	157	550	
H280	184+54	75	150	550	D
H250	184+46	65	157	550	
H280	184+46	75	150	550	
H315	233	85	178	660	

NEMA C		
Ø	Z	
143TC - 145TC	65	A
182TC - 184TC	78	
213TC - 215TC	90	
254TC - 256TC	106	B
284TC - 286TC	138	
143TC - 145TC	65+38	
182TC - 184TC	78+38	
213TC - 215TC	90+38	
254TC - 256TC	106+38	
284TC - 286TC	138+38	



	Kutup Sayısı-Number Of Poles-Anzahl Pole									D	E	P	M	N	S	A	T	R	B	F	L
	2			4			6														
	[kW]	[kW]	[kW]	[kW]	[kW]	[kW]	[kW]	[kW]	[kW]												
63	0,18	-	0,25	0,12	-	0,18	0,06	-	0,09	11	23	140	115	95	9,5	4	3	4	12,5	M4	215
71	0,37	-	0,55	0,25	-	0,37	0,18	-	0,25	14	30	160	130	110	9,5	4	3,5	5	16	M5	247
80	0,75	-	1,1	0,55	-	0,75	0,37	-	0,55	19	40	200	165	130	11,5	4	3,5	6	21,5	M6	278
90	1,5	-	2,2	1,1	-	1,5	0,75	-	1,1	24	50	200	165	130	11,5	4	3,5	8	27	M8	308-333
100-112	3	-	4	2,2	3	4	1,5	-	2,2	28	60	250	215	180	14	4	4	8	31	M10	375-392
132	5,5	-	7,5	5,5	-	7,5	3	4	5,5	38	80	300	265	230	14	4	4	10	41	M12	455-501
160	11	15	11	11	-	15	7,5	-	11	42	110	350	300	250	18	4	4	12	45	M16	601
180	22	-	-	18,5	-	22	15	-	-	48	110	350	300	250	18	4	5	14	51,5	M16	659
200	30	-	37	30	-	37	22	-	22	55	110	400	350	300	18	4	5	16	59	M20	747
225	45	-	-	37	-	45	30	-	-	60 (55-2p)	140	450	400	350	18	8	5	18 (16-2p)	64 (59-29)	M20	780-820
250	55	-	-	55	-	55	37	-	-	65 (60-2p)	140	550	500	450	18	8	5	18	69 (64-2p)	M20	895
280	75	-	90	75	-	90	45	-	55	75 (65-2p)	140	550	500	450	18	8	5	20 (18-2p)	79,5 (69-2p)	M20	907-958
315	110	132	160	110	132	160	75	90	110	85 (65-2p)	170	660	600	550	24	8	6	22	90 (69-2p)	M20	1150-1330